

# BUILDERnews

WESTERN REGION

THE LARGEST REGIONAL BUILDING TRADE MAGAZINE IN THE NATION | NOVEMBER 2005 | \$4.95

## CRITICAL PLANNING POINTS

in Real Estate  
Partnerships and  
Joint Ventures  
P. 36

How to Effectively Pursue  
and Plan the Reuse of  
Closed Military Bases

P. 28

Construction  
Theft:  
A Loss Cause

P. 26

### PRODUCT/ TECH FOCUS

Fireplaces P. 44

Title 24 P. 52

Interior Finishes P. 58

Central Vac Systems P. 62

BUILDERnews sponsors

**JICLIVE**

RESIDENTIAL CONSTRUCTION SHOW

DEC 1-2, Portland, Ore.



# The Melange

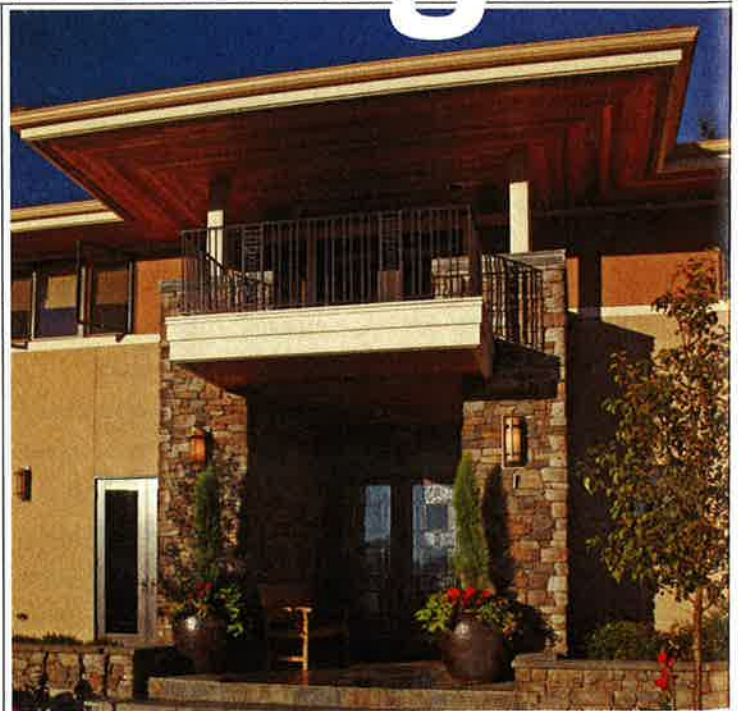
**Location:**  
Woodinville, Wash.

**Builder:**  
McPherson Construction

**Architect:**  
Curtis Gelotte Architects PS

The Melange—one of the homes designed and built for the 2005 Street of Dreams in Woodinville, Wash.—was inspired by the work of Frank Lloyd Wright. Eldorado Stone's Meseta Fieldledge profile featuring the drystack technique is effectively used throughout the two-story home.

The home is 4,938 square feet, with four bedrooms and 3.25 baths. Its "Prairie Style" design creates clean lines and large, open spaces and windows that allow sun and the outdoors in, wherever possible.



COURTESY LINNA PHOTOGRAPHICS