



The Peninsula

**GATEWAY**

Wednesday,  
March 1, 1989

# Home

Peninsula Life

**B**  
Section

# Rooms With A View

## Roger MacPherson built his dad's dream house

By Julie Stagers,  
Gateway staff

**W**hen Gary and Cecelia MacPherson wanted to build the house of their dreams, they knew just where to go. The couple chose to have Gary's son Roger MacPherson design and build their new house. The results couldn't be more spectacular.

The younger MacPherson, of MacPherson Construction and Design in Redmond, maximized the possibilities for a spectacular view and then loaded every room with special features. Gary, Cecelia, and her son, Greg Nelson, 17, took up residence in September.

Gary MacPherson beams, "This is kind of a dream, having your own son, who is a graduate architect not only design the home, but build the home ... I'm very proud."

The 3,500 square foot, three bedroom house is carefully nestled onto an irregularly shaped waterfront lot. MacPherson, the designer, took advantage of every nook and cranny.

The house contains a theater room, office space, formal and informal dining areas, a master suite with a bath to die for, and acres of closet space. A boat garage is even hidden cleverly away beneath it all.

Cecelia MacPherson marvels, "How can one person think this whole thing up and lay it out and get this wonderful feeling? ... He (Roger) took advantage of everything. It's very efficient, very livable."

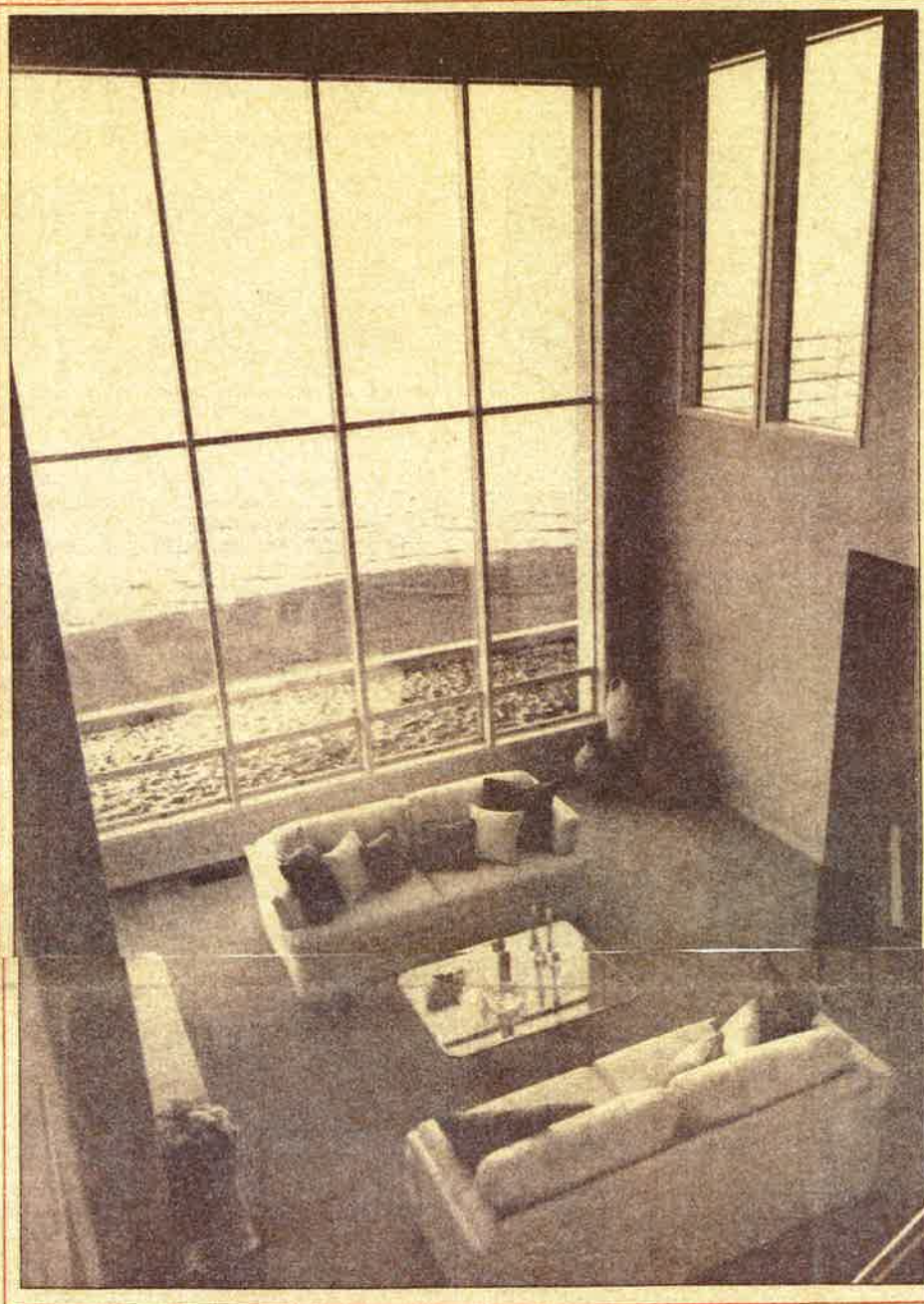
It's not only livable. It is elegant.

The color scheme throughout is pale and crisp. The MacPhersons opted for light warm neutrals — ivories, eggshells, sandstones, punctuated with roses and lavenders.

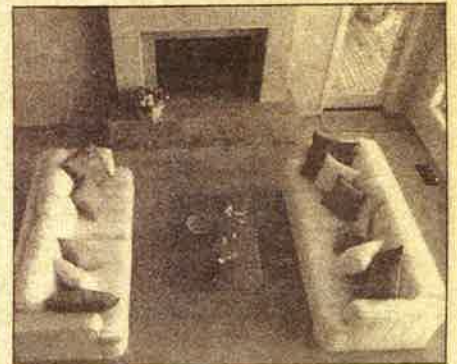
Double doors open onto a pale rose-and-ivory flecked marble entry way. The home is dominated by an expansive view of Henderson Bay. Waterbirds and boats parade past the wall of windows rising nearly two stories from the sunken living room to the main floor.

A pair of white, subtly Art Deco couches provide a space for conversation in front of an immense fireplace, the dimensions of which nearly mirror the wall of windows. A black baby grand piano rests in a transition space between the living room and the theater room.

The theater room includes a 67-inch rear projected viewing screen and sound around stereo effect. The



A VIEW of Henderson Bay dominates the main living area of Gary and Cecelia MacPherson's home. Windows rise from the floor of the sunken living room to the ceiling of the main floor.



Gateway Photos/Julie Stagers

SEEN FROM above the matching white living room couches create a cozy conversation area in front of the fireplace.

system, which projects sounds from points throughout the room, creates the same high-quality sound usually available only in movie houses. It's a cozy place for movies and popcorn.

The home's Bang and Olufson sound system — radio, cassette, and compact disc player — was designed by The Music Room in Seattle. It may be operated by remote control from most of the home's major rooms. Cecelia demonstrates by turning the system on and filling the sitting room upstairs with pure, perfect sound.

Upstairs the formal dining room, which overlooks the living room, shares the view of Henderson Bay.

The kitchen, with a charming photograph of the Frisko Freeze at night, is a friendly place. The built-in appliances, microwave oven mounted overhead, and a range top built into a work island all make

work easier. Curved custom cabinets add a definite sense of style to the room.

"We love them," Cecelia says. "I couldn't tell you how much. I absolutely love this kitchen."

The kitchen shares a view of the bay with an informal sitting room just off the formal dining room.

The views continue right across the front of the home, through son Greg's room and Gary's office space to the master suite.

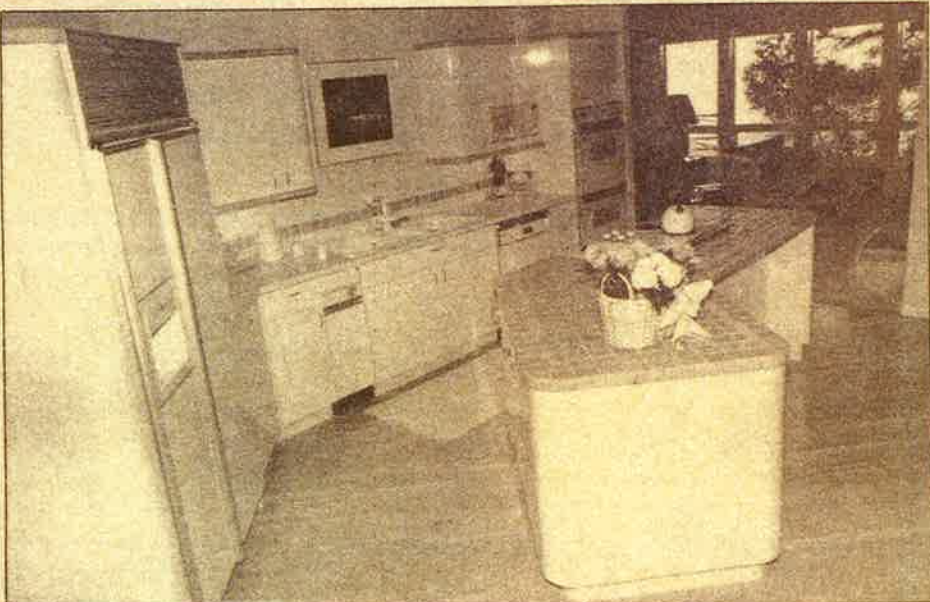
The view there is as fabulous inside as out. The suite includes a glittering bathroom the size of a small bedroom. A curving wall of glass blocks sets off a spacious shower and a separate bathtub has every modern convenience. Tub and shower are united visually with a unique tile Cecelia found. It is a very subtle eggshell and sandstone shadow stripe.

Even the tub has a view — of the lovely of wooded hillside leading down to the house.

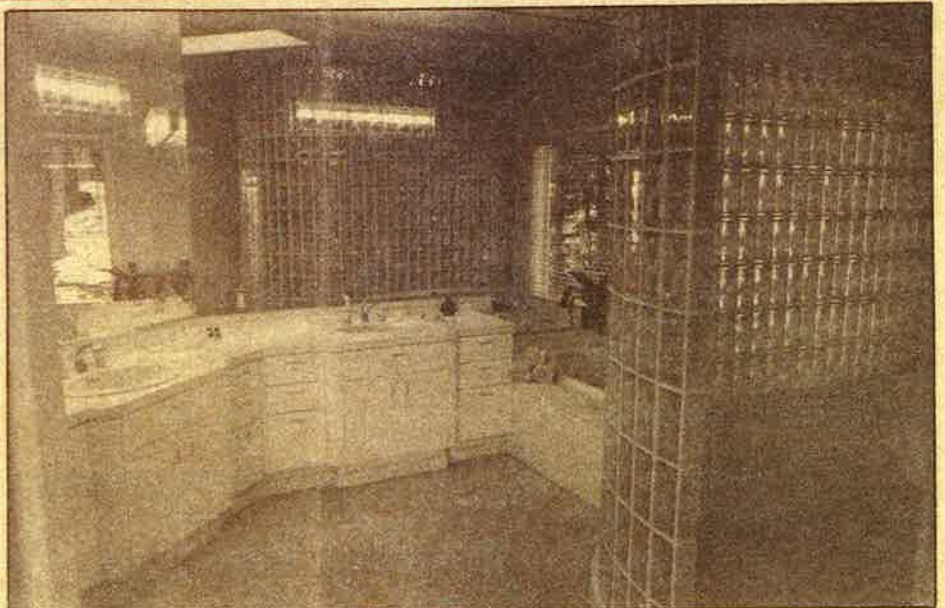
That may give new meaning to a room with a view.



THE FORMAL dining room overlooks the living room below.



CURVED CUSTOM cabinets add flair to an ultra-convenient kitchen, which shares a view of the bay with an informal sitting room.



GLASS BLOCKS add sparkle to the master bath. The tile on tub and shower is a subtle shadow stripe in eggshell and sandstone.