

TOP 20 BUYS FOR KITCHEN & BATH AND WHERE TO GET THEM!

SEATTLE & HOMES LIFESTYLES™

50 pages of
**BEST
DESIGN**
IDEAS from the
city's top pros

Only here!
Designer
Showhouse
program
benefiting Pacific
Northwest
Ballet



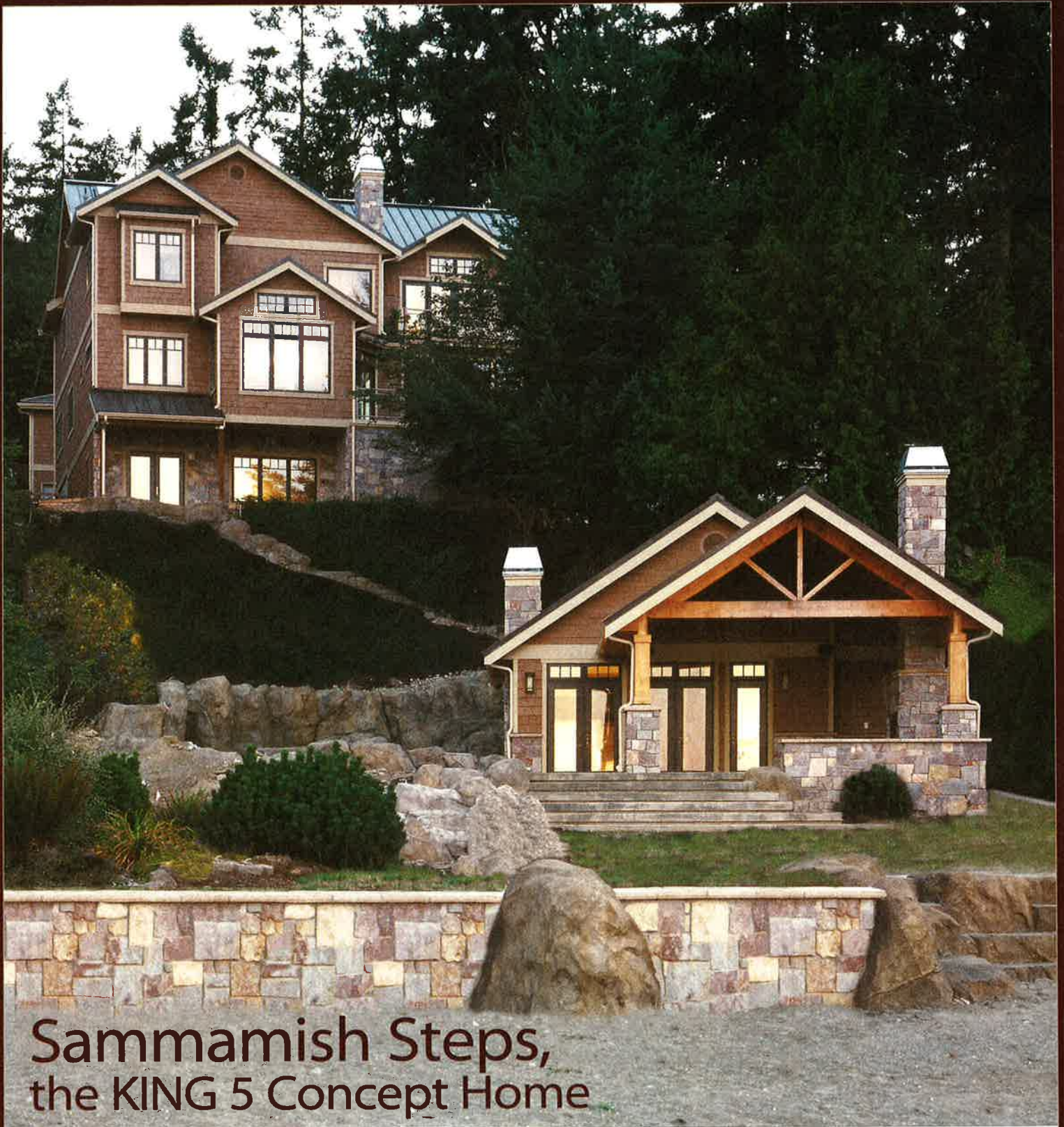
In the garden
with Seattle artist
Ginny Ruffner

Decorating in a
snap: where to
shop, what to buy

\$3.95 SEPTEMBER 2005



seattlehomemag.com



Sammamish Steps, the KING 5 Concept Home

NORTHLIGHT PHOTOGRAPHY WWW.NLPINC.COM



CALIFORNIA CLOSETS®



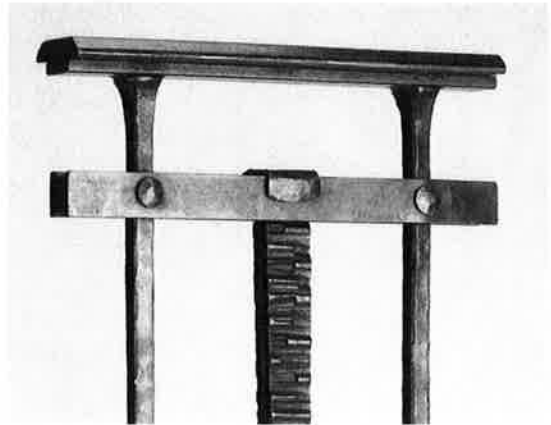
SCHOENFELD
interiors



Seattle Lighting

Distinct American style. Innovative building materials. Creative home design.

Join us at **Sammamish Steps, the KING 5 Concept Home**. From framing to furniture installation, the construction of this Craftsman style home, nestled on the hillside overlooking Lake Sammamish, was captured on KING 5. Designed and built by Roger MacPherson of MacPherson Construction and Design, the KING 5 Concept Home features three levels, 4,834 square feet of living space in the main home and a 500-square-foot cabana. Dana Foster of DTF Design added creative ideas to the interior environments for timeless, livable spaces. Several students from Seattle's Pratt Fine Arts Center have their pieces featured in the KING 5 Concept Home, including artist-crafted handrails and powder room sink to enhance the home's interior. Pratt, a non-profit membership organization, supports the creative spirit of thousands of students each year.



©WILLIAM WRIGHT PHOTOGRAPHY/WILLIAMWRIGHTPHOTO.COM

The proceeds from the home tour's \$10 admission fee will benefit Pratt Fine Arts Center.

**SAMMAMISH STEPS,
THE KING 5 CONCEPT HOME**
238 W Lake Sammamish NE in Bellevue

On tour beginning September 10, 2005
Open weekends through October 2, 2005
Fridays and Saturdays open 10 a.m.-6 p.m.
Sundays open 1 p.m.-6 p.m.

Parking and shuttle service available at
St. Peter's United Methodist Church
17222 NE 8th St. in Bellevue

Sammamish Steps, the KING5 Concept Home · Contributors

BUILDER & DESIGNER

MacPherson Construction & Design, LLC

Roger MacPherson

425-391-3333, macphersonconstruction.com

MacPherson Construction & Design has specialized in the design and construction of custom homes for 22 years. Controlling every aspect of design and construction allows us to make sure projects are efficient and on budget while never losing sight of quality from beginning to end. Such direct accountability is a client's assurance of excellent results.

INTERIOR DESIGNER

DTF Design

Dana Foster

425-961-0305, dtfdesign.com

APPLIANCES

Crossroads Appliances

Don Heitlauf

425-746-0550, crossroadsappliances.com

It's our service that sets us apart. Indoor appliances : 2 Sub-Zero refrigerators side-by-side, Viking range & oven, Dacor warming oven, Miele dishwasher, Bosch washer & dryer, and GE washer & dryer. Outdoor appliances : Dacor custom barbecue, GE microwave, Cabana: GE microwave, refrigerator, dishwasher, oven and range.

ART

Pratt Fine Arts

206-328-2200, pratt.org

The place to make art. Pratt Fine Arts celebrates the dynamics of making art. At Pratt you will learn and develop techniques that elevate your ability to express yourself. Pratt is a non-profit membership organization that supports the creative spirit of thousands of students every year. Pratt is committed to open access for all segments of the community and encourages those in need of financial assistance to explore the opportunities for financial support.

CLOSETS

California Closets

Gina Smart

206-423-5079, calclosets.com

Simplifying home and life. Custom-designed storage solutions. Classic Line used in all closets of the home. Room-to-Work series is used in the studio above the garage. All work surfaces and cabinetry were also done in the studio.

COUNTERTOPS/FLOOR

Pental Granite & Marble

Peter Pental

206-768-1278, pentalonline.com

Five unique slabs are showcased throughout the home. Also, Pental's exclusive Sadler Stone Tile is used in the studio above the garage.

FIREPLACE, SPA

Lennox

Clearwater Spas & Stoves

Jim Bower

888-353-SPAS, clearwaterspas.com

Life is good, soak it up! Lennox Fireplaces and Lennox Hearth products in Master Bedroom, Living Room, Cabana and Cabana patio. A Clearwater spa is featured on the lower deck.

FURNITURE (main floor)

Schoenfeld Interiors

Bob Schoenfeld

425-285-0570, schoenfeldinteriors.com

Everything that brings a room together. Sofa and 2 chairs in Living Room are made by *Thayercoggin*. Cocktail table in Living Room is by *Kolka Designs*. The solid walnut Dining Table is *Maria Yee*. Dining Table chairs are *Palecek*. Barstools are by *Charleston Forge*. All place-settings are from the *Table Top Store in Bellevue*, and the Wool Rug is from *Palace Rugs*.

LANDSCAPING

Highridge Corporation

Sharry Nadjm

425-392-0905, highridge.com

We create the most beautiful places. Custom landscaping and sprinkler system, along with custom outdoor lighting, are showcased on the property.

LIGHTING

Seattle Lighting

April Shumabukuro

206-622-4736, 425-455-2110, seattlelighting.com

The Pacific Northwest's leading source for exclusive designs and expert advice. Outdoor Lighting and sconces in the media room and on stairs are Hubbardton Forge products. Ceiling fans are from the Casablanca Fan Co. Fixtures in the nook, master bathroom, and cabana bathroom are from the Minka Lavery Co., and Troy provided the closet, pantry, and laundry room lighting.

PAINT

Benjamin Moore

Seattle Paint Supply

Lance Baze

253-859-3900, benjaminmoore.com

All painting was done with a Regal Matte Finish, with the exception of the ceilings. The overall home color is *Monroe Bisque* (HC26).

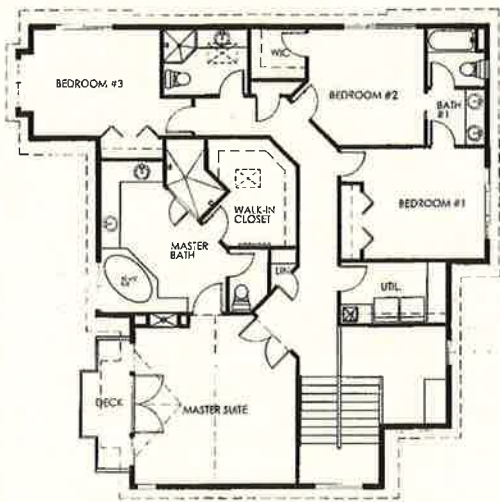
Entry way – *Jackson Tan* (HC46)

Media Room – *Jackson Tan* (HC46)

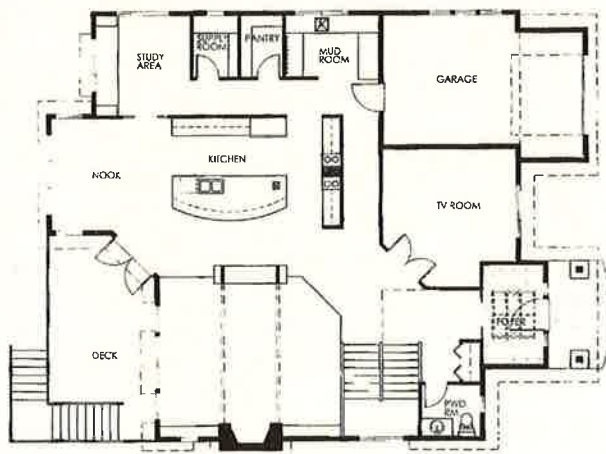
Cabana – *Hepple White Ivory* (HC36)

Ceiling – *Super Spec Flat* (Product #275)

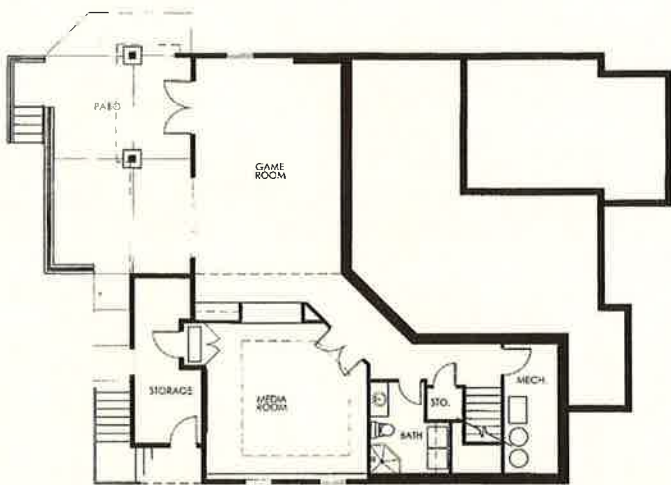
Media Room Ceiling – *Shel Burne Buff* (HC28)



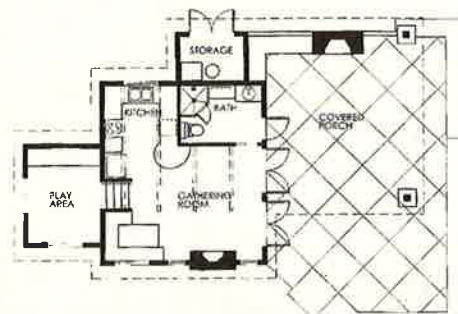
UPPER LEVEL



MAIN LEVEL



LOWER LEVEL



CABANA