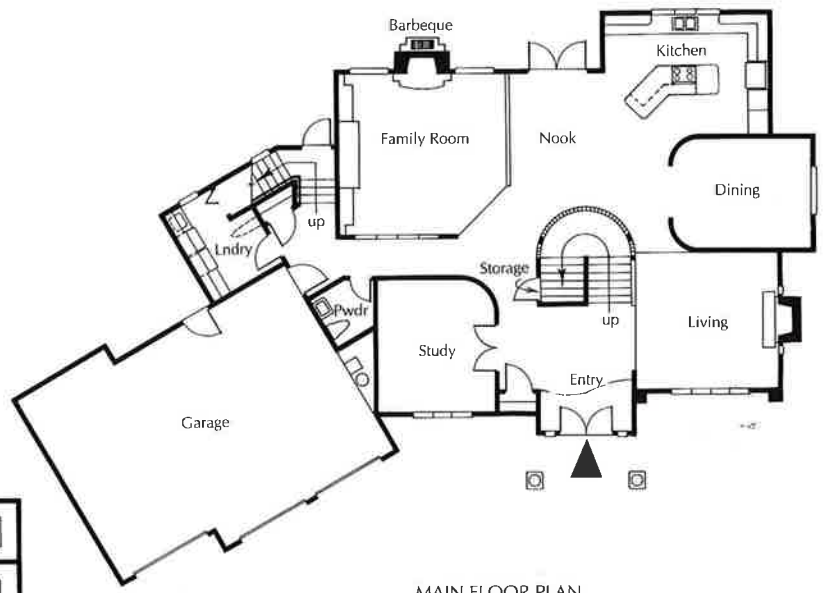


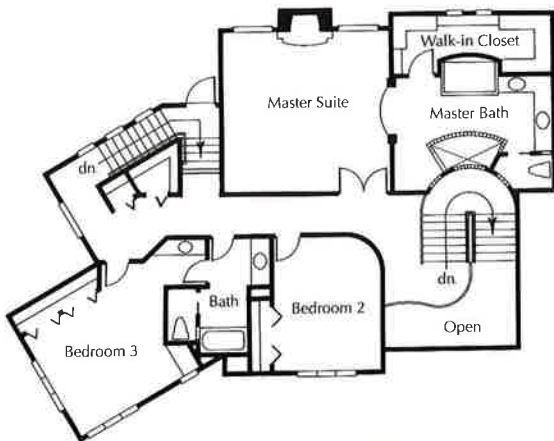
# 5/Vision 2000



*By  
Mac Pherson  
Construction &  
Design*



MAIN FLOOR PLAN



UPPER FLOOR PLAN



## The Builder

**M**acPherson Construction and Design's unique blend of architectural knowledge and practical construction experience enables the creation of innovative and complex homes with exceptional quality. Specializing in custom construction, Roger K. MacPherson recognizes the needs and wants of his clientele.

Every home should be a reflection of its owner's personality, the outcome is genuinely refreshing and distinctive. A good design flows. A home must mesh with the site it bears on and reflect the functions from within. Uniqueness, long-term teamwork and being a company that cares are the ingredients of MacPherson Construction & Design's success.

MacPherson's Dream Home Vision 2000 transcends the ordinary design. He capitalizes on streamlined efficiency. Roger MacPherson skillfully utilizes stimulating concepts in lighting, texture, movement and space to create an atmosphere of harmony.

## The Interior Design

**V**ision 2000 reflects the subtle harmony that can be created by an interior designer and architect. O'Neill-Hanson Design, MacPherson Construction and Design and Foster's Furniture design team have worked in sync to bring you Vision 2000.

The moment you enter Vision 2000 you will be impressed by the dramatic use of materials. Shimmering glass block, black granite, marble and corian used in innovative ways sets Vision 2000 apart. Unique contemporary furnishings by Foster's Furniture accented by custom artwork and hand-painted walls add to the contemporary elegance of Vision 2000.

O'Neill-Hanson Design is committed to educating the client to design possibilities, presenting cohesive options and overseeing the design



Interior Design by O'Neill-Hanson Design  
7981 168th Ave N.E., Redmond, • (206) 881-3100  
Furnishings by Foster's Furniture.

application. "The finished design should not be a reflection of the designer's taste, rather a reflection of the client's needs and dreams."

## The House

**V**ision 2000 with its undulating curves, clean lines and impressive usage of glass blocks creates an exciting sense of movement and flow. Repetition of form and materials link spaces together in a remarkably cohesive manner. Quality and originality are abundant throughout.

A magnificent arched doorway invites you into Vision 2000. Glass blocks glow from behind the living room black granite fireplace. Curved walls lead you from room to room with ease. Clean soft contours of the European-style cabinetry, the granite slab kitchen island and corian countertops highlight a very functional kitchen. The spectacular circular glass block stairwell lends sparkle and light to the homes interior. Upstairs, in the master suite, marble floors grace the entry into the bathroom. Here again this breathtaking use of space richly reaffirms the consistency and cohesiveness of Roger MacPherson's exceptional home design. Enjoy!

### **Builder**

**MacPherson Construction  
& Design**  
(206) 868-5069

**Price**  
\$560,000

**Square Feet**  
3,499

**House Design**  
Roger MacPherson

**Interior Design**  
O'Neill-Hanson Design

**Landscaping**  
Cedarbrook Landscaping

**Marketing Representative**  
Ruth Watson/Gretchen Fava  
The Heller Co., Realtors  
(206) 392-0505